

GINGERMARTIN+CO

LUXURY REAL ESTATE | SONOMA & NAPA VALLEY



1008 THIRD AVE | NAPA VALLEY

\$2,200,000

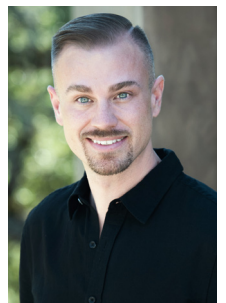
WWW.PLANSandPARCEL3RD.AVE.COM



GINGER MARTIN
415.516.3939
GINGERMARTIN.COM
GINGER@GINGERMARTIN.COM
DRE 00643485

Sotheby's
INTERNATIONAL REALTY

WWW.PLANSandPARCEL3RD.AVE.COM



DEX HOELLE
707.204.5517
GINGERMARTIN.COM
DEX@GINGERMARTIN.COM
DRE 02166779

THIS MATERIAL IS BASED UPON INFORMATION, WHICH WE CONSIDER RELIABLE, BUT IT HAS BEEN SUPPLIED BY THIRD PARTIES. WE CANNOT REPRESENT THAT IT IS ACCURATE OR COMPLETE, AND IT SHOULD NOT BE RELIED UPON AS SUCH. THIS OFFERING IS SUBJECT TO ERRORS, OMISSIONS, CHANGE OF PRICE OR WITHDRAWAL WITHOUT NOTICE. ©MCMXCVII SOTHEBY'S INTERNATIONAL REALTY, INC. EQUAL HOUSING OPPORTUNITY.



1008 3rd Ave | NAPA VALLEY | OFFERED AT \$2,200,000
www.PlansandParcel3rdAve.com

DESIGN & DETAILS

- Developer, Tom Braegelmann + Alex Arriaga
- Architect, William Chambers + Associates

GENERAL

- Vacant Land with Permitted/Approved Plans + Parcel
- APN, 052-310-002
- Zoning, Residential Country (RC)
- Ground Water Ordinance, Ground Water Deficient Area
- 0.6 ± Acres
- Plans for Main House 5,658± SF, 4BD, 4BA, 2HB
- Plans for Detached Pool House, 416± SF, Unconditioned, 1BA
- 2 Car Garage (752± SF)

INFRASTRUCTURE

- Water, Well
- Electric Available, PG&E
- Septic Available



www.PlansandParcel3rdAve.com

THIS MATERIAL IS BASED UPON INFORMATION, WHICH WE CONSIDER RELIABLE, BUT IT HAS BEEN SUPPLIED BY THIRD PARTIES. WE CANNOT REPRESENT THAT IT IS ACCURATE OR COMPLETE, AND IT SHOULD NOT BE RELIED UPON AS SUCH. THIS OFFERING IS SUBJECT TO ERRORS, OMISSIONS, CHANGE OF PRICE OR WITHDRAWAL WITHOUT NOTICE. ©MCMXCVII SOTHEBY'S INTERNATIONAL REALTY, INC. EQUAL HOUSING OPPORTUNITY.